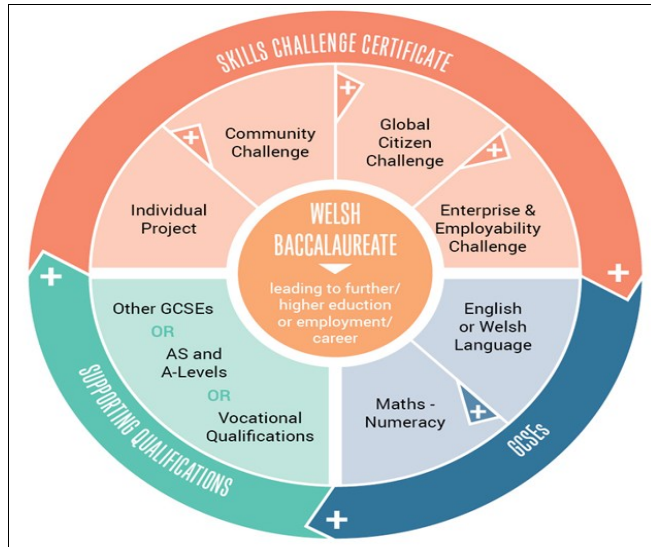


The New Welsh Baccalaureate

Contact: Mrs A Ebenezer

What is the Welsh Baccalaureate?

The Welsh Baccalaureate is an exciting new qualification for 14 to 19 year old students in Wales. It's a flexible, inclusive qualification that underpins learners' choices of GCSE, AS/A level and vocational qualifications. It is primarily about the development and assessment of essential skills such as literacy, numeracy, digital literacy, critical thinking and problem solving, planning and organization, creativity and innovation and personal effectiveness.



WBQ

What does the course contain?

The Welsh Baccalaureate Qualification consists of:

♦ **Skills Challenge certificate** - consisting of four components:

- Individual Project
- Enterprise and Employability Challenge
- Global Citizenship Challenge
- Community Challenge

♦ **GCSE**

- Welsh language or English language
- Mathematics - Numeracy

♦ **Supporting Qualifications** - courses / programmes currently offered e.g. General Certificate of Education (GCSE), Vocational GCSE, Advanced Subsidiary (AS) / Advanced (A level), BTEC.

What is the course structure and method of assessment?

To gain the Advanced Welsh Baccalaureate students must achieve:

♦ **Skills Challenge certificate** - In order to achieve the Skills Challenge Certificate, learners must achieve all four components - the Individual Project plus the three challenges with a minimum of all at a level 3 Pass.

♦ **GCSE** - Welsh language or English language at grade A* - C
- Mathematics - Numeracy at grade A* - C

♦ **Supporting Qualifications** - Two A levels at grade A* - E or equivalent must be achieved during the Advanced Welsh Baccalaureate programme.

The Welsh Baccalaureate is worth one A level, graded A* - E.

WBQ